

Designer Series

Our fastest growing line - Flat Track by Leatherneck Hardware - just got more interesting with the all new Designer Hardware Series. With styling to fit unique spaces, you can still count on our distinctive quality, superior materials and long-time craftsmanship. Constructed from laser-cut steel and available in all of Leatherneck's unique and durable finishes. Many of the hangers are interchangeable with our standard 402 hardware style *(noted below as interchangeable)*.



Ranger

For any space with a western flair. *(402 interchangeable)*



T-Top

This hanger is ideal for spaces with little room at the top of the door. The hanger mounts flush with the top and corner edge of the door and only drops down 2". No measuring means easy installation.



Cornered

Our easiest install yet! With no measuring needed, this hanger pair offers a unique mounting hardware option. Designed in left and right hand positions for each corner of the door.



Mourning Star

This hanger is very similar to our arrowhead, but with a twist... our design team envisioned a look of a celestial tear drop. *(402 interchangeable)*



Fireball

Unique overlay on this hanger gives a contrast of color or texture. Both the strap and the overlay can come in any color or texture. *(402 interchangeable)*



Vined

Bring a bit of nature inside with our most intricate style yet. This hanger is perfect for doors with plenty of flat corner area. Designed in left and right hand positions for each corner of the door. *(402 interchangeable)*



Wrought Iron

Following the classic designs of wrought iron, this intricate steel hanger will add dimension to any space. *(402 interchangeable)*



Sprocket

With an open strap face not seen in many of our hangers, this style works for the gear head in all of us. *(402 interchangeable)*



Fleur-de-lis

Our take on this popular French design. *(402 interchangeable)*



Shown in
402 Standard Series

FLAT TRACK

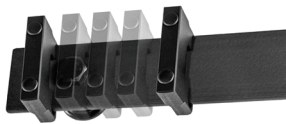
BY LEATHERNECK HARDWARE

Accessories



Close-Ease

The mechanism, concealed behind the track, catches the activator for gentle, even closing. Door weight capacity of 175 lbs. Set of Two.



Slide Stop

Easy-to-use stop, designed to guarantee your door stops exactly where you need it to. Available in all finishes.



Bi-pass Bracket

This addition makes having a bi-pass system easy. Extra overhead room needed to attach bracket to the wall. Includes all extra hardware needed to attach the track to the bracket. Made for standard & low-profile wheel hangers only.



Reversible-Adjustable Stop

This item gives about 1/2" of adjustment facing forward or in reverse for those applications where the stop needs to be exact.

Other Designs



Flat Top

A new look for our most popular hanger. Based on our standard 402 hanger, the new 415 features a Flat Top.



Tomahawk

Featuring our new aluminum spoked wheel with a unique, open-face strap.



Paratrooper

Another unique cut strap to pair with our new aluminum spoked wheels.

Have a question or need more information?

Our experienced support team would love to help. Call us at 888.442.4572, extension 104 or 122. Or email us at info@doorhdwe.com.



Leatherneck Hardware, Inc.
P.O. Box 1142, Danville, Illinois 61834
www.doorhdwe.com