

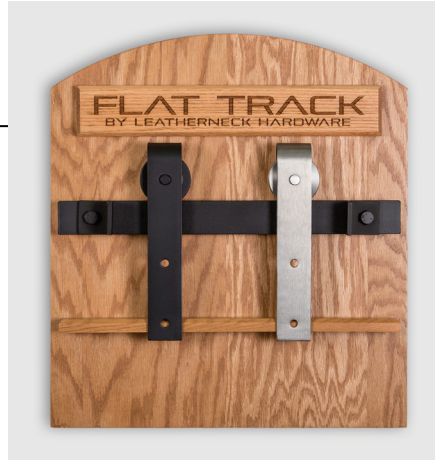
FLAT TRACK

BY LEATHERNECK HARDWARE

SHOWROOM DISPLAY

A solid-wood Showroom Display Kit featuring Flat Track by Leatherneck Hardware is a great way to showcase our unique barn door style hardware. This crafted, compact wooden display may be wall mounted or placed on a counter top.

Flat Track Hardware styling dates back to the turn of the century when it was used for barn doors, and in warehouses and industrial settings. Today the unique look and finishes are perfect for many space-saving interior and exterior applications. Capacities are 400 lb. and 800 lb. units. Hardware available for order in complete kits for both single slide openings and bi-parting openings, or can be ordered as individual components.



Display measures: 23 1/2" wide x 25" tall x 11 1/2" deep

Kit Includes

- Locally sourced, solid wood Display Board
Both Wall Mount and Counter Top Display
- Mounted Track
- 2 Flat Track Hangers
Finishes - Flat Black and Brushed Nickel
- Literature

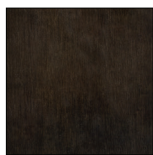
Finishes



00 Flat Black



90 Brushed Nickel Finish



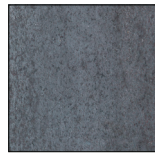
05 Antique Bronze



01 New Penny



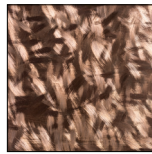
80 Painted Bronze



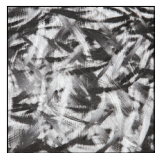
27 Clear Coated



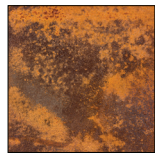
25 Unfinished



74 Machined Copper



30 Machine Polished



60 Weathered Rust



50 Brushed Stainless Steel



40 Mill Finish Stainless Steel

Showroom Display Board & Component Kit

Part number 1024-0010

Cost for the complete Showroom Display Kit is \$250. To help defer the cost of the display, companies who purchase a Showroom Display Kit will receive a \$25 per-set discount on the first 10 sets of Flat Track ordered. Offer expires six months from initial purchase.

Have a question or need more information?

Our experienced support team would love to help. Call us at 888.442.4572, extension 104 or 122.

Or email us at

info@doorhdwe.com.

